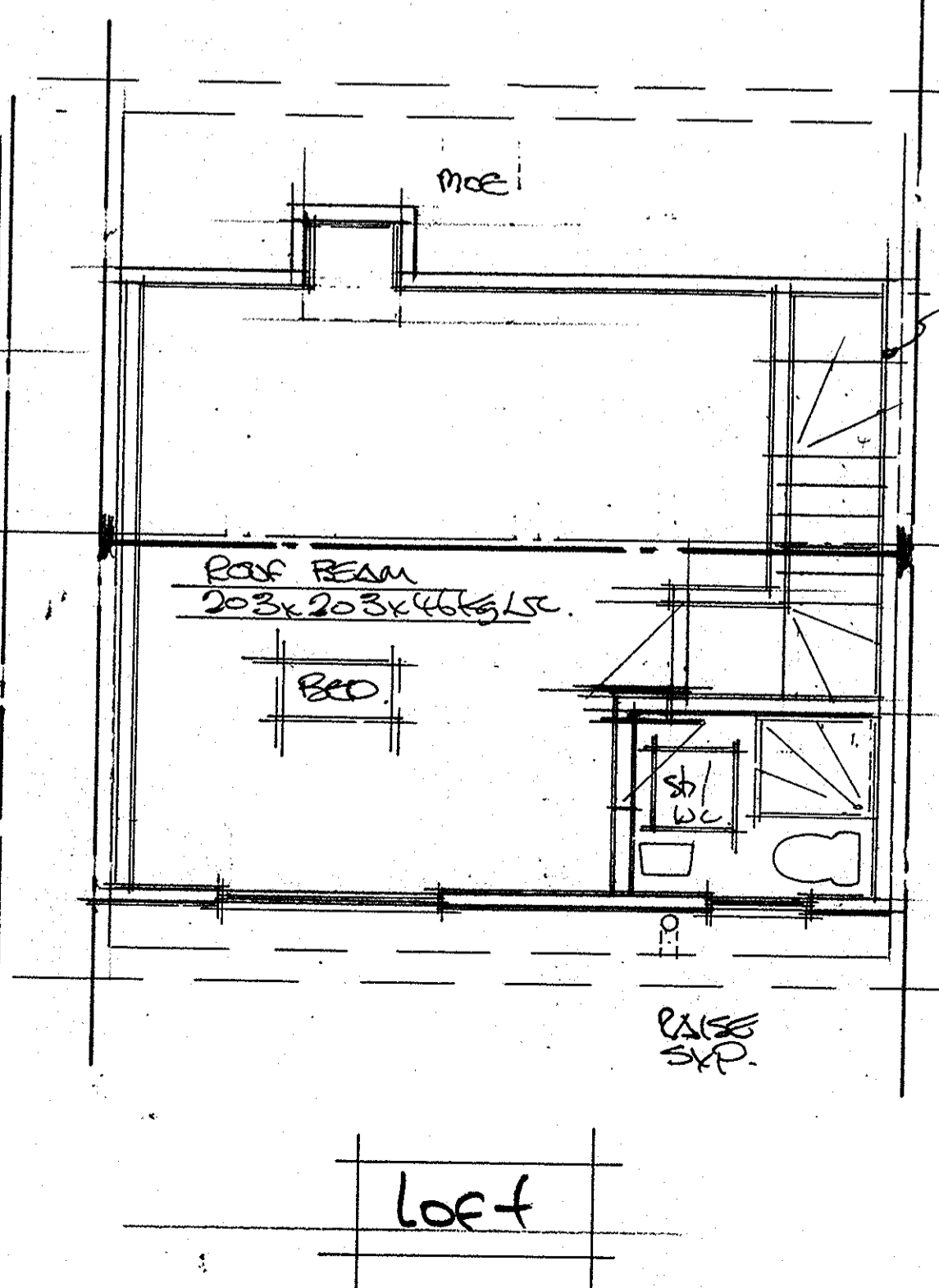
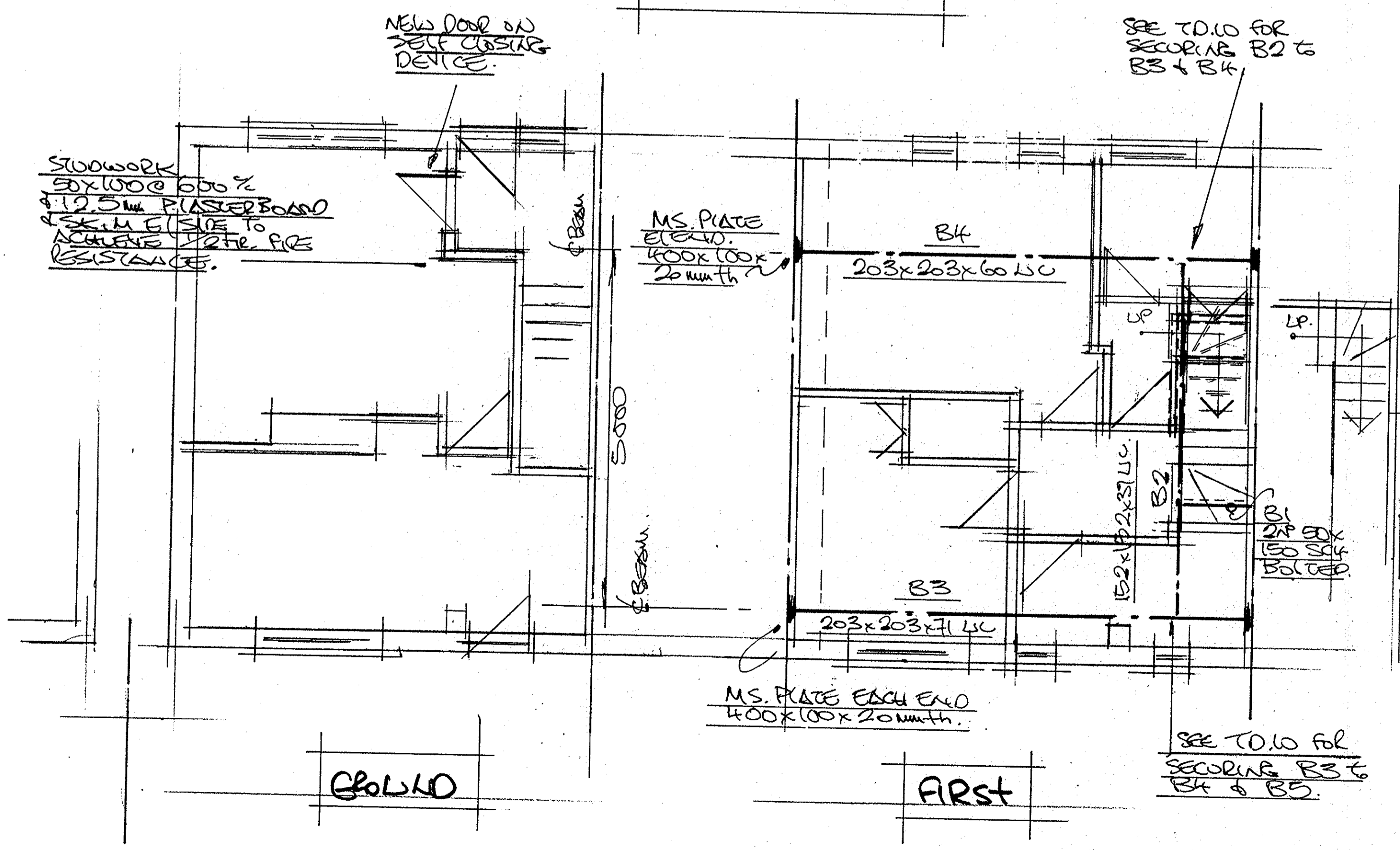


SEE GIL. LOTS FOR
GENERAL NOTES.

All electrical work required to meet the requirements of part P (Electrical Safety must be designed, installed, inspected and tested by a person competent to do so. Prior to completion the council should be satisfied that part P has been complied with. This may require an appropriate BS 7671 electrical installation certificate to be issued for the work by a person competent to do so.

REFER TO ENGINEER FOR
BEAM SPLICE IF
INSTALLATION PROVED
DIFFICULT.



MIN. STAIR WIDTH 600mm
CLEAR. RISERS 220mm
GANDES 245 (50mm
TO WINDERS). ENSURE
2m CLEAR HEADROOM
CLEAR OF T.

EACH PARTY WALL TO HAVE
100mm VOID & EXPOSED SCOPS
WITH 100mm MINERAL WOOL
BACKING BETWEEN - 12.5mm
PLASTERBO + SKIN FINISH.

PASSIVE FEND
200x100x150 DEEP

FLOOR INSULATION TO
GIVE A MASS OF NOT
LESS THAN 10kg/m²

SH. ROOM TO HAVE
MECHANICAL VENT
DUCTED TO OPEN AIR OF
15 LITRES SEC. EXTRACT
20 MIN. FROM 1/3HP
MIN. AIR CHANGES PER
HR.

REV	DESCRIPTION	DATE
A.	B. REGS	SEPT. 06
Project: LOFT CONVERSION & FLOOR FORMER		
DRG. NO. 01.	REV A	
1870 (1:00)	JAN. 06.	
Colin Millard Unit 5 Barleylands Craft Centre, Barleylands Road, Billericay, Essex. CM11 2UD 01268 274114		